

SPANISH COMMANDS!

POSITIVE, NEGATIVE, TÚ & USTED IMPERATIVE

SPANISH AFFIRMATIVE & NEGATIVE COMMANDS

AFFIRMATIVE

Tell someone to do something.

NEGATIVE

Tell someone not to do something.

Informal



Dame una carta.
Give me one card.



No corras, te vas a caer.
Don't run, you'll fall.

Formal



Pase, por favor.
Come in, please



No se mueva, por favor.
Don't move, please.

IMPERATIVE ENDINGS IN SPANISH

AFFIRMATIVE IMPERATIVE

NEGATIVE IMPERATIVE

Person	-AR	-ER/-IR	-AR	-ER/-IR
Tú	-a	-e	-es	-as
Usted	-e	-a	-e	-a
Vosotros	-d	-d	-éis	-áis
Ustedes	-en	-an	-en	-an

IMPERATIVE ENDINGS IN SPANISH

AFFIRMATIVE IMPERATIVE

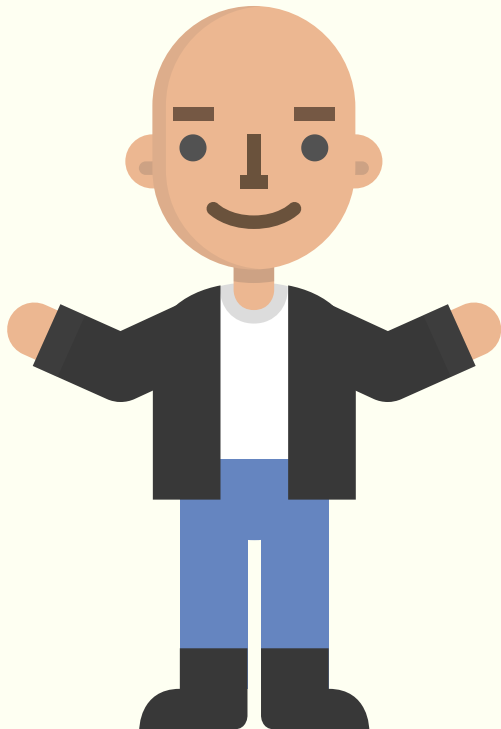
NEGATIVE IMPERATIVE

Person	-AR	-ER/-IR	-AR	-ER/-IR
Tú	Canta <u>a</u>	Pide <u>e</u>	Cante <u>s</u>	Pida <u>s</u>
Usted	Cante <u>e</u>	Pida <u>a</u>	Cante <u>e</u>	Pida <u>a</u>
Vosotros	Canta <u>ad</u>	Pedid <u>id</u>	Cant <u>éis</u>	Pida <u>áis</u>
Ustedes	Cante <u>en</u>	Pida <u>an</u>	Cante <u>en</u>	Pida <u>an</u>

Note: stem-changing verbs in the present also have spelling changes in the imperative.

IRREGULAR IMPERATIVES IN SPANISH

AFFIRMATIVE IMPERATIVE: TÚ



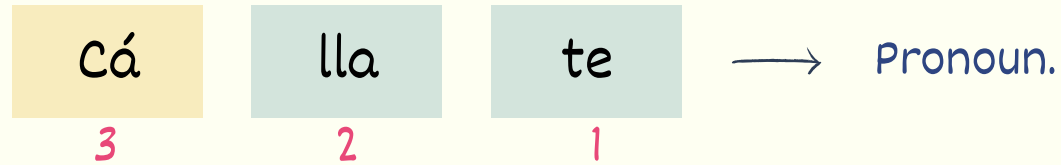
VIN	DIE	SEL	HAS	TEN	WEA	PON	S
—	—	—	—	—	—	—	—
Ven	Di	Sal	Haz	Ten	Ve	Pon	Sé
—	—	—	—	—	—	—	—
Venir	Decir	Salir	Hacer	Tener	Ir	Poner	Ser

This mnemonic can help you remember these irregular imperatives.

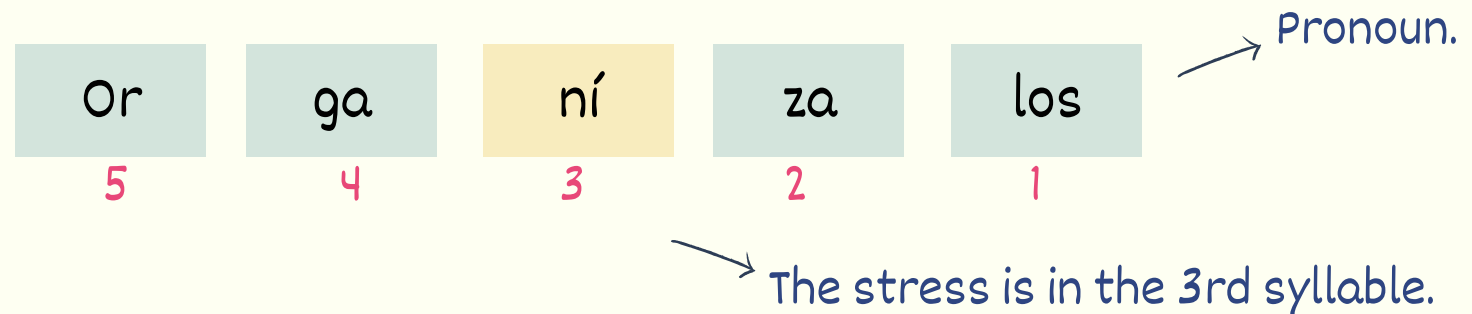
ACCENT MARKS FOR COMMANDS IN SPANISH

Cállate:

The stress is in the 3rd syllable. We add an accent mark.



Organízalos:



Note: In Spanish, we always count syllables backwards, from the end of the word to the start (right to left).

KEY POINTS: SPANISH COMMANDS

- The imperative in Spanish is a verb form used to give commands, instructions, advice, suggestions, and requests.
- In Spanish, the imperative is used with four subject pronouns: tú, usted, vosotros, and ustedes.
- Affirmative commands are used to tell people what to do, whereas negative commands tell people what not to do.
- The imperative endings are the same for -ER and -IR verbs.
- With affirmative commands, direct, indirect, and reflexive pronouns must be attached to the verb.
- Commands with more than two syllables have a written accent in the stressed syllable.
- Infinitives in Spanish are used in written signs to give commands.

LINK TO THIS GUIDE



[Spanish Commands: Positive, Negative, Tú & Usted Imperative](#)

RELATED GUIDES & RESOURCES TO CHECK OUT

[Spanish Imperative Practice Quiz](#)

 [Watch My Lessons on YouTube!](#)  [Spanish Immersion YouTube](#)

Learning Spanish: Get My Free Spanish Learning Kit!

[Click here](#) to join the Tell Me In Spanish and get your copy of the kit now.