

SPANISH

PREPOSITIONS OF PLACE

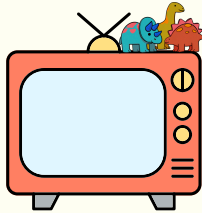
LIST, EXAMPLES & USES



PREPOSITIONS OF PLACE IN SPANISH

Sobre

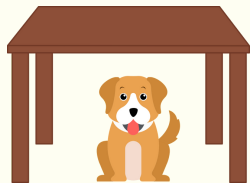
On / Over / Above / About



¿Por qué dejas tus juguetes sobre la tele?
Why do you leave your toys above the TV?

Bajo

Under / Below



Tu perro está bajo la mesa.
Your dog is under the table.

Entre

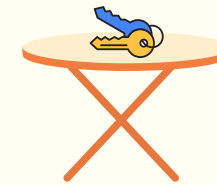
Between



La farmacia está entre el banco y el hospital.
The pharmacy is between the bank and the hospital.

En

In / On



Mis llaves están en la mesa.
My keys are on the table.

SOBRE VS EN IN SPANISH

KEY POINTS

- 'En' is used to talk about things inside or on the surface of something.
- 'Sobre' is more commonly used to refer to subjects or topics.
- As a preposition of place, 'sobre' also indicates that a person or thing is on top of something else.
 - It also indicate that something is over or above a person or thing.



Dejé las llaves sobre tu bolsa.
I left your keys on top of your bag.

El control está en la mesa.
The remote is on the table.

SPANISH PREPOSITIONS & ADVERBS OF PLACE



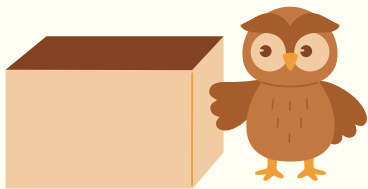
A la derecha de
To the right of



Adelante de / Delante de
Infront of



Encima de
On top of



A la izquierda de
To the left of



Atrás de / Detrás de
Behind



Abajo de / Debajo de
Below / Under

SPANISH PREPOSITIONS & ADVERBS OF PLACE



En frente de

Across from / In front of



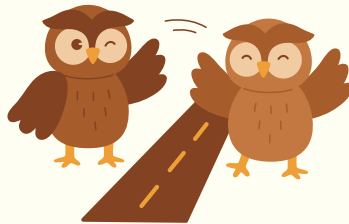
En medio de

In between / In the middle of



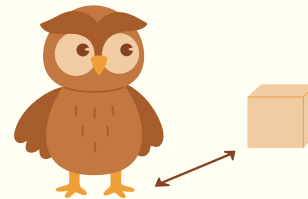
Adentro de / Dentro de

Inside of



Al lado de

Next to



Junto a

Next to

SAY & ASK WHERE SOMETHING IS IN SPANISH

In Spanish, 'estar' expresses the location of something.

Está + [singular determiner] + [noun]

¿Dónde está la parada de autobús?

Where is the bus stop?

Están + [plural determiner] + [noun]

¿Dónde están mis lentes?

Where are my glasses?



KEY POINTS: PREPOSITIONS OF PLACE IN SPANISH

- In Spanish, prepositions of place convey where a person or thing is in relation to something or someone else.
- En is one of the most common prepositions of location in Spanish. It's the equivalent of the English prepositions 'on' and 'in'.
- Prepositions + adverbs of place (prepositional phrases) convey the location more precisely.
- Most Spanish prepositional phrases of location use the prepositions 'de' and 'a'.
- De and a are contracted to 'del' and 'al' when followed by 'el' (singular masculine definite article).

LINK TO THIS GUIDE



[Spanish Prepositions of Place - List, Examples & Uses](#)

RELATED GUIDES & RESOURCES TO CHECK OUT

[Guide to Spanish Prepositions: List, Uses & Examples](#)

 [Watch My Lessons on YouTube!](#)  [Spanish Immersion YouTube](#)

Learning Spanish: Get My Free Spanish Learning Kit!

[Click here](#) to join the Tell Me In Spanish and get your copy of the kit now.