

SPANISH BASICS: VOCABULARY FOR DIRECTIONS IN SPANISH



HOW TO ASK FOR DIRECTIONS IN SPANISH

¿Dónde está...?
Where is the...?

¿Donde se encuentra...?
Where is the...located?

¿Cómo puedo llegar a...?
How can I get to...?

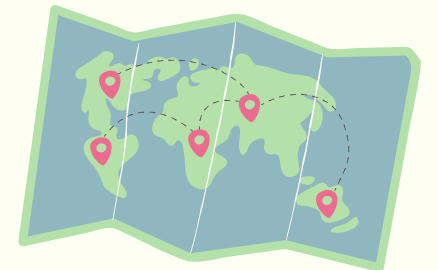
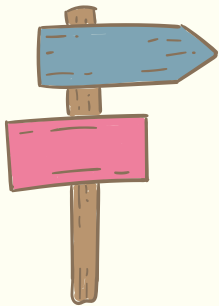
¿Hay algún...?*
Is there a...?

Estoy buscando...
I'm looking for...

¿Cómo llego a...?
How do I get to the...?

¿Hay alguna...?
Is there a...?

¿Por dónde está...?
Which way is the...?



HOW TO ASK FOR DIRECTIONS IN SPANISH

Complete the expressions by adding the name of the place to which you want to go.

[Direction expression] + [article] + [place]

¿Dónde está el museo?

Where is the museum?

¿Cómo llego a la estación de tren?

How do I get to the train station?

BASIC VERBS TO GIVE DIRECTIONS IN SPANISH

Dar vuelta / Doblar / Girar

To turn

Cruzar

To cross

Caminar

To walk

Topar con

To reach

Hay

There is / There are

Ir

To go

Llegar

To arrive / To reach

Seguir / Continuar

To continue / To go on

Estar

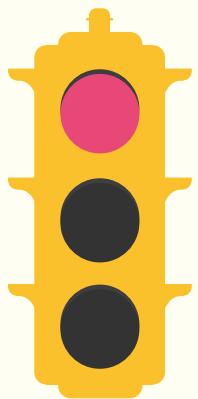
To be

Pasar

To pass

Tomar

To take



PHRASES ADVERBS & PREPOSITIONS OF PLACE

A una cuadra
One block away

En
In / On

En dirección a
Toward / Towards

A la derecha
Right

Detrás de
Behind of

Enfrente de
Across from / In front of

A la izquierda
Left

Cerca de
Nearby / Close to

Entre
Between

PHRASES ADVERBS & PREPOSITIONS OF PLACE

A mano derecha

On the right

Derecho

Straight

Hasta

Until / Down to

A mano izquierda

On the left

Primera

First

La siguiente

Next

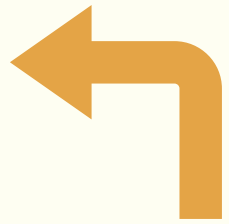
Al lado

Next to

Por aquí

Around here

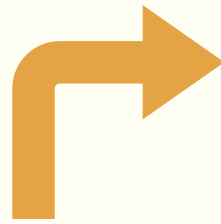
HOW TO GIVE DIRECTIONS IN SPANISH



A la izquierda
Left



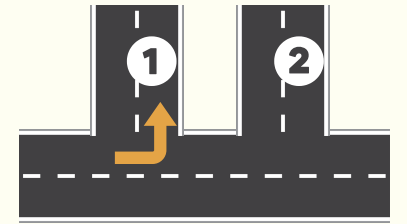
Derecho
Straight



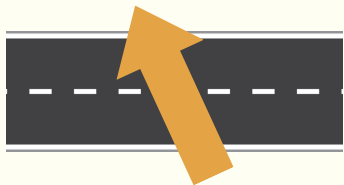
A la derecha
Right



Dar vuelta / Girar
Turn



Primera
First



Cruzar
Cross



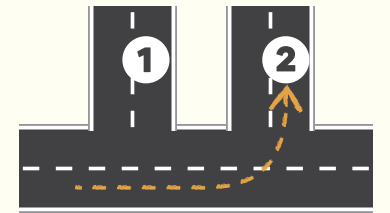
Entre
Between



Enfrente de
Across from / In front of



Al lado
Next to



La siguiente
Next

PARTS OF THE CITY IN SPANISH



La avenida
Avenue



La biblioteca
Library



El cajero
ATM



El aeropuerto
Airport



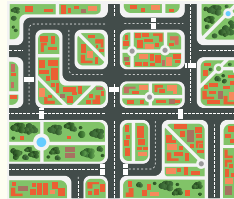
El restaurante
Restaurant



El banco
Bank



La calle
Street



La cuadra
Block



La parada
Stop



La escuela
School



La iglesia
Church

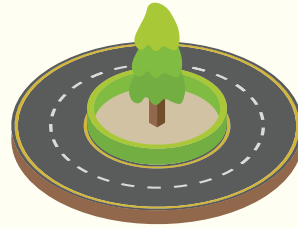
PARTS OF THE CITY IN SPANISH



La estación de tren
Train station



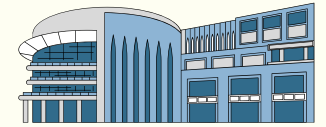
La manzana
Block



La glorieta / La rotonda
Roundabout



La salida
Exit



La plaza
Square



El hotel
Hotel



La oficina
Office



El parque
Park



El museo
Museum



La tienda
Store / Shop

KEY POINTS: ASK & GIVE DIRECTIONS IN SPANISH

- The verb *estar* in Spanish is used to express location.
- Use the impersonal word 'hay' to ask or indicate the existence of something in a particular location.
- ¿Dónde está? is the most common way to ask for something's location.
- 'Caminar', 'seguir', 'cruzar', and 'dar vuelta' are some of the most common verbs to give directions.
- Spanish prepositions of place and adverbs allow you to express more precisely where something is.
- Use greetings in Spanish to pose questions more politely.
- Contract 'a + el' into 'al' to smooth the pronunciation which means 'to the' or 'at the'.

LINK TO THIS GUIDE



[Vocabulary for Directions in Spanish](#)

RELATED GUIDES & RESOURCES TO CHECK OUT

[Spanish Prepositions of Place: List, Examples & Uses](#)

 [Watch My Lessons on YouTube!](#)  [Spanish Immersion YouTube](#)

Learning Spanish: Get My Free Spanish Learning Kit!

[Click here](#) to join the Tell Me In Spanish and get your copy of the kit now.